



****Over the Christmas break please report positive COVID-19 cases to mescovidalert@maidenerleghtrust.org****

From the Headteacher

17 December 2020 - Issue 35

As we reach the end of our first term back since the first lockdown, I'd like to start by saying how impressed I have been with our students for what has been a very different and challenging term. Our final assembly this year is about resilience and it is very clear that our students have developed this in such a positive manner, I am blown away each day by observing how they are coping with the pandemic. Of course, some have struggled along the way and we have ensured that support is there for them when they need it. We have had to ask students to isolate, on some occasions more than once, and they have met this challenge head on with drive and determination. Well done to every single student, I am so proud and honoured to be your headteacher.

I would also like to thank two other groups of people. Firstly, you, the parents, who have been incredibly supportive of everything we have asked of you and your families. As a parent myself, I know the demands you have faced over the past few months and the feedback we have received from you with regards to processes, education and communication has been positive and always constructive. The second group is the wonderful staff that I am privileged to work alongside and call colleagues. Despite what you may read in the press, the staff here at Maiden Erlegh have worked tirelessly over the past term to keep the school running, even when staffing issues may have caused others to partially close. I want to take this opportunity to publicly thank all of the staff and reassure you that your child's education is in the best possible hands with everyone here.

Despite the challenges we have faced, students have been taking part in a variety of House Challenges. We have had a special species challenge, interfaith challenge, PE photo challenge and a movie poster challenge to name a few. We have even had some festive competitions such as the MFL Christmas bake-off and the Christmas card challenge. Well done to Ana in Year 8 for designing the winning school Christmas card!

I am also thrilled with some of the accolades Maiden Erlegh School has been awarded in recent weeks. We were shortlisted for Secondary School of the Year in the TES awards. Though we did not win, it is amazing to have all of our hard work recognised, and this is something that we could not have achieved without the support of our students and parents. We were also successful in securing the Gold Young Carers in Schools Award by The Children's Society. This recognises our work and support to students who identify as young carers. If you think your child might be a young carer I would encourage you to view this section of our website: <https://www.maidenerleghschool.co.uk/page/?title=Young+Carers&pid=42>

CALENDAR

| | |
|-------------|--|
| 18 December | Student finish for Christmas Break |
| 4 January | Students return from Christmas Break |
| 20 January | Parents Apprenticeship Information Evening |
| 27 January | School Closed for Staff Training Day |
| 2 February | Virtual Trust Careers Fair |
| 9 February | Year 8 Options Evening |
| 12 February | Students finish for Half Term |
| 22 February | Students return to School |

This half term we have continued to hold our events virtually. We have had Year 10, Year 11 and Year 13 parents' evening which were all held virtually. I would like to thank parents for the overwhelmingly positive feedback on the new virtual evenings, I am pleased they have been a success. Year 10 and Year 11 students and parents also engaged in virtual sessions from Positively MAD to learn about study skills and preparing for exams. We hope that students and parents found this useful. On the topic of exams, information regarding public exams going ahead in the summer can be found here: <https://www.maidenerleghschool.co.uk/attachments/download.asp?file=2014&type=pdf>

I have been so proud of the #TeamMaidenErlegh community. They have pulled together despite all the challenges. I hope that students, parents and staff take the time to have a well-deserved break and recharge their batteries ready for the New Year. Students have worked incredibly hard and should be so proud of all they have achieved this term. Whilst I do not wish to end on the note of COVID-19, please can I urge you to ensure that if a student tests positive to please email us immediately on mescovidalert@maidenerleghtrust.org as we will still need to ensure we can track and trace any potential contacts of positive cases once we have broken up for the holidays.

Finally, I wish you all a restful festive break. I hope you and your families take care and keep safe. We look forward to seeing students back on Monday 4 January.

Mr P Gibson
Headteacher

**Wishing everyone a
wonderful festive
season and a happy
and healthy New Year**



WILDE

CURIE

BOLT

ATTENBOROUGH

YOUSAFZAI

RODDICK

House News

What an outstanding first term we have had. There have been so many House Competitions to engage with and over 25,000 house points have been awarded to students for their fantastic classwork, homework or kindness. Well done #TEAMMAIDENERLEGH

Poetry Competition

To celebrate National Poetry Day, the English Department ran a poetry competition based on this year's theme which was 'vision.' Congratulations to the winners below and to everyone who entered.

1st place – 15 points: Natalia H Year 10 'Sunrise Tomorrow' (Roddick)

2nd place – 12 points: Isabel N Year 7 'My Vision of the Future' (Bolt)

3rd place – 10 points: Neha K Year 9 'A strong Vision' (Curie)

Honourable mention – 5 points: Syeda N Year 8 'If I could See Colour' (Curie)

[Click here to view their entries](#)

Thank you to Mrs Elliott and Mr Brown for running this competition and judging the entries.

The Special Species House Competition

Well done to everyone who took part – they were brilliant! Thank you to Mrs Murphy for running this, she really enjoyed judging them all. They demonstrated excellent imagination and creativity.

Every entry received a house point so well done to all who took part. The following students gained 5 House points and so their entries will be sent to the Linnean Society to enter their National Competition.

James T (Bolt), Konstantina K (Bolt), Ananya A (Roddick), Antonia P (Roddick), Lily M (Wilde), Louise S (Wilde), Natalia H (Wilde), Chatulya A (Yousafzai), Fatima C (Yousafzai) and Isabel G (Yousafzai).

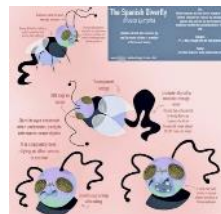
Here are some of the amazing creations:



Chatulya A (Yr 9)



Krish K (Yr 7)



Louise S (Yr 8)

Film Competition

Students were given the challenge of recreating an iconic scene from a film of their choice using things that you have/can find at home and in the surrounding areas. Well done to all involved and to Mrs Webb for running this competition. We all really enjoyed looking at your creative entries!



1st Place - Sam W
Team Yousafzai



2nd Place - Jonas L
Team Curie



3rd Place - Ariadne K
and Anwesha M
Team Attenborough and
Team Wilde

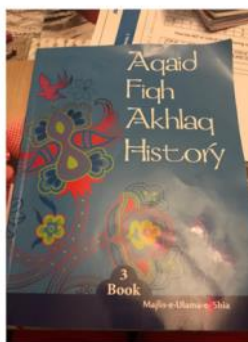


Highly commended entries went to: Natalia H (Roddick), Ana M (Curie), Marton U – (Curie), Adrian S (Wilde), Duvie G (Attenborough), Nolan C (Wilde) and Abi G (Yousafzai)

Interfaith Week Competition

To celebrate Inter Faith Week 2020, the Religion and Philosophy department ran a 'Religion is everywhere' House competition. We asked students to find examples or links to religion in everyday life. Well done to everyone who took part. Here are some of the fantastic winners. Thank to Miss Borthwick for organising this. It was amazing to see so many entries highlighting the wonderful diversity in our community and student understanding of religion in our world.

Mehdi S – Islam in everyday life with explanations (Team Wilde)



This is my Islamic studies book. Every week I attend online classes to further my knowledge within my religion

Hadiyah G – Religion in film, art, poetry and popular culture (Team Roddick)

Where can religion be found in everyday life?

- ❖ In movies: for example, there is a constant relation to Jesus in the film The Chronicles of Narnia. Aslan is shown as the characteristics of Jesus. He is portrayed as strong, fearless and sacrificial.
- ❖ Artwork: Religious paintings idealize, glorify, suggest and tell the story of a religion. They keep religious traditions alive and make it easier for individuals to visualize a concept or event that is otherwise difficult to imagine through the use of mere words.
- ❖ In books/poems: In Memoriam connects the despair Tennyson felt over the loss of his friend Arthur Hallam and the despair he felt when contemplating a godless world. In the end, the poem affirms both religious faith and faith in human progress. The poem: <https://www.sparknotes.com/poetry/tennyson/section8/>
- ❖ Celebrities: for example, Tim Tebow, a famous American football player, kneeled during the national anthem to pray. This is an example because there is religion included in sports.

Natalia H – religion in music playlist and analysis of a song with reference to the design argument (Team Wilde)

Lucy K – images of religious buildings and shops in the local area (Attenborough)



Linguascope Competition

Thank you to Mr Raso for running the Linguascope House challenge this term.



Runners- up:

| | |
|------------|-----------|
| Antonia P | Roddick |
| Bilal A | Wilde |
| Daniel T | Bolt |
| Emily A | Curie |
| Isabel N | Bolt |
| James T | Bolt |
| Jennifer G | Bolt |
| Luke M | Curie |
| Mehak T | Curie |
| Mohammed S | Atten |
| Naomi A | Yousafzai |
| Natalia H | Roddick |
| Natalia H | Wilde |



Well done to all involved.

COMPETITION WINNER

Henry O

Attenborough



Christmas Card Competition

Mrs Nottage was blown away again this year by the quality of the entries to the Christmas Card competition. Mr Gibson found it very hard to choose a winner but the winning entry was created by Ana M in Year 8 for Team Curie. Very well done!



Isabel N (Team Bolt)



Winner- Ana M



Neha K (Team Curie)



Nivetha M (Team Attenborough)

Festive Jumper Day



On Friday 11 December, Maiden Erlegh School took part in Festive Jumper Day to raise money for six very important charities. A House

assembly was also shown to students where our House Ambassadors spoke to students about the important work these charities are doing.

Each charity has links to our Houses or has been chosen by students from each of the Houses. The charities selected were:

Attenborough: [World Wildlife Fund \(WWF\)](#)

Bolt: [Sport in Mind](#)

Curie: [Marie Curie charity](#)

Roddick: [Daisy's Dream](#)

Wilde: [Alzheimer's Society](#)

Yousafzai: [Malala Fund](#)

Thank you so much to everyone who took part and for everyone who donated. If you haven't gotten round to it yet, it's not too late! A suggested donation amount of £2 would be really appreciated in order to help the fantastic charity supported by your child's House. You can donate via the parent pay app and all the money will go to these charities.

Your donation can really make a difference to the work these vital charities do, especially in light of the current pandemic. These charities need us now more than ever. On behalf of these charities, thank you for all of your kind donations.

AUTUMN TERM SCORES ON THE DOORS...

1st place- Team Wilde with 4,524 points

2nd place- Team Roddick with 4,487 points

3rd place- Team Bolt with 4,478 points

4th place- Team Yousafzai with 4,119 points

5th place- Team Curie with 4,039 points

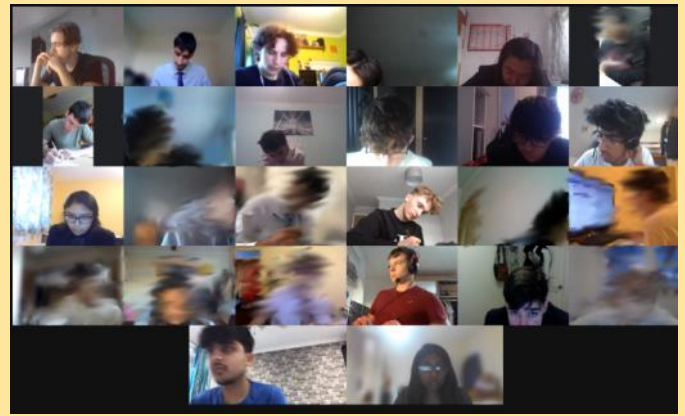
6th place- Team Attenborough with 3,904 points

There are many more opportunities to earn house points and to take part in House competitions next term. Keep following us on social media and your House google classrooms pages to keep up to date with all the most recent House news.



Senior Maths Challenge

On 3 November, twenty-six students from Year 12 and 13 took part in our first on-line Senior Mathematical Challenge, a national competition run by the UK Mathematics Trust. Students faced twenty-five increasingly challenging questions for which they had an hour and a half to pick the correct answers without the benefit of a calculator, with the added pressure of negative marks for wrong answers!



Here are two of the “easy” questions from the start of the challenge, and a harder one from nearer the end.

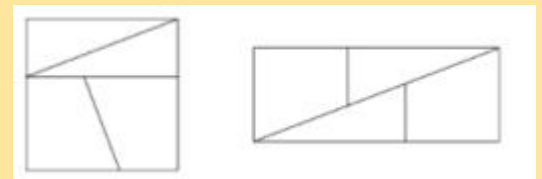
Question 5. What is $\sqrt{123454321}$?

- a) 1111111 b) 111111 c) 11111 d) 1111 e) 111

Question 8. What is the largest prime factor of $106^2 - 15^2$?

- a) 3 b) 7 c) 11 d) 13 e) 17

Question 22. A square with perimeter 4 cm can be cut into two congruent right-angled triangles and two congruent trapezia as shown in the first diagram in such a way that the four pieces can be rearranged to form the rectangle shown in the second diagram.



What is the perimeter, in centimetres, of this rectangle?

- a) $2\sqrt{5}$ b) $4\sqrt{2}$ c) 5 d) $4\sqrt{3}$ e) $3\sqrt{7}$

Check your answers on the back page.



We'd love to hear your feedback, whether 'slick' or 'slack' we'd love to hear from you. Please click on slick or slack to submit for your feedback.

Homework Club - still running!
Year 7 - Monday, Wednesday and Friday
Year 8 - Tuesday and Thursday



Work of Art

Artist of the Month - October

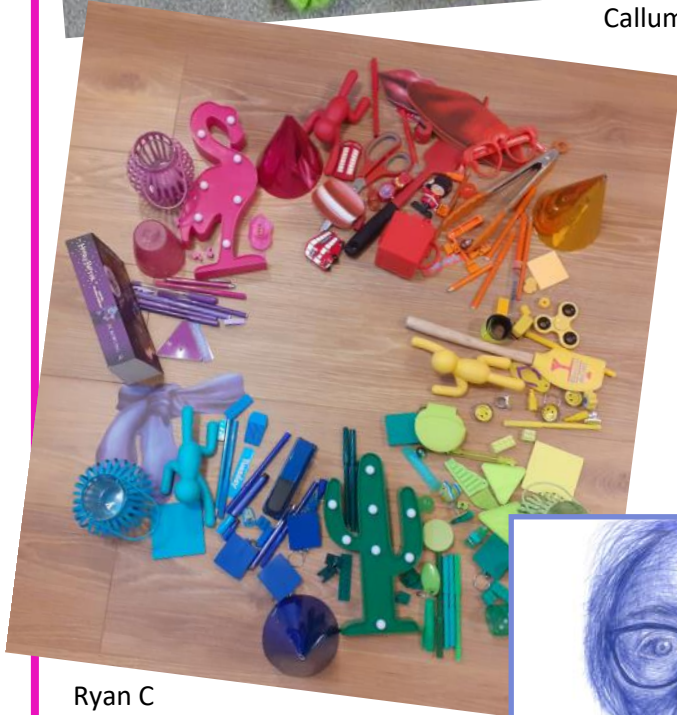
Congratulations to Callum A (Yr7), Ola A (Yr7), Ryan C (Yr7), Sophia N (Yr7), Jess L (Yr11), Ye Dam J (Yr11), Robert M (Yr12) and Sophia C (Yr13) for being awarded 'Artist of the Month' for October.



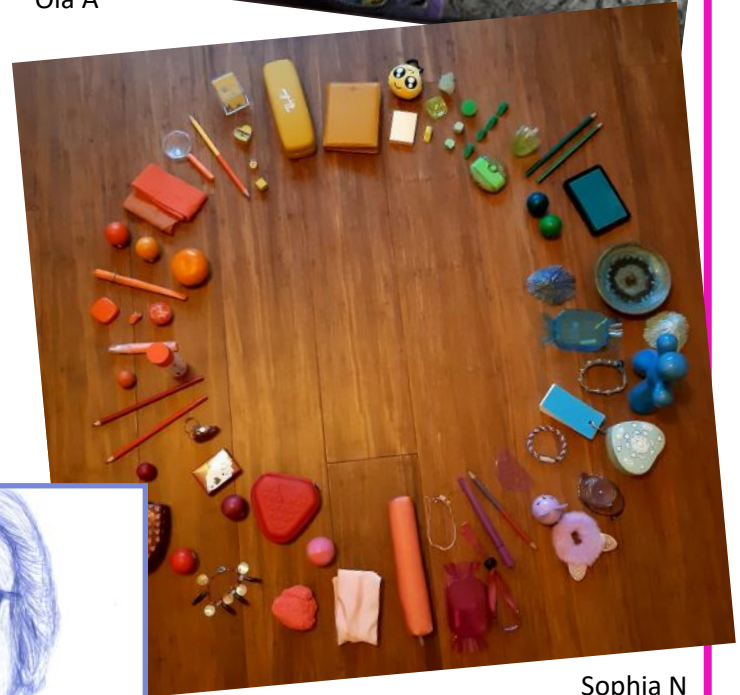
Callum A



Ola A



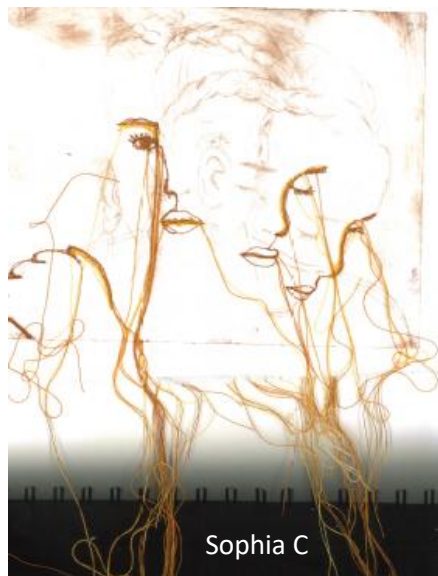
Ryan C



Sophia N



Jess L



Sophia C



Ye Dam J



Robert M

Work of Art

Artist of the Month - November

Congratulations to Ana M (Yr8), Barbara B (Yr8), Camron P (Yr8), Elena A (Yr8), Harris T (Yr8), Jake Y (Yr8), Jevesh M (Yr8), Lara C (Yr8), Zahra H (Yr8), Zara R (Yr8), Eva S (Yr9), Freya B (Yr9) and Sam H (Yr11) for being awarded 'Artist of the Month' for November.



Ana M



Barbara B



Camron P



Elena A



Harris T



Jake Y



Jevesh M



Lara C



Zahra H



Zara R



Eva S



Freya B



Sam H

Careers, Work Experience, Work Related Learning and STEAM Provision

As we approach the end of the first term, we want to share with you some of the activities that have been going on as part of our careers, work experience, work-related and STEAM learning programme at Maiden Erlegh School. We continue to adapt to provide young people with careers education, information, advice and guidance during the current Covid restrictions.

Trust Careers Newsletter – Spotlight

We are extremely proud of Spotlight, our careers newsletter which is shared across our different Trust schools and published on a half termly basis. This is designed to provide students with careers-related information, resources, and opportunities, as well as offering tips to parents and carers about how they can best support their child in planning for their next steps. Our

previous editions can be found using the link below. Our latest edition will be published before we finish for Christmas so watch out for this useful resource!

Click here to
view the latest
edition of
SPOTLIGHT

Year 12 'Next Steps' Sessions

We are in the process of organising 'next steps' group sessions for students in Year 12 (from February 2021), delivered by Adviza to support and guide students to start considering the options available to them post-18 including the university, apprenticeship and employment routes. Further information to come in due course.

Year 13 Apprenticeship and Employment Workshops

We are also in the process of organising workshops specifically aimed at students in Year 13 who wish to embark on the apprenticeship or employment route when they leave us at the end of the academic year. These will be delivered by Pathway CTM in February 2021. Further information to come in due course.

Year 12 and 13 Virtual Work Experience Placements

Our expectation is that students complete 30 hours of work experience that is directly related to their chosen career path in either Year 12 or 13. A large majority of students have been taking advantage of the huge number of virtual work experience placements that are currently being offered in place of the normal face-to-face experience. We would recommend that students continue to apply for these virtual placements as we know that universities and apprenticeship providers are increasingly expecting students to have gained first-hand exposure of the workplace, either physically or remotely and this will provide students with concrete examples to make reference to in future personal statements and job applications. Placements are currently on offer from a wide variety of organisations including Spotify, Ofcom, KPMG, Law firms, Brighton and Sussex Medical School, JP Morgan, British Airways, Construction firms, Teaching, Journalism and many others. We post all of these opportunities and more on the year group google classroom pages.

Year 11, 12 and 13 Apprenticeship Assemblies

This term has also included assemblies to Year 11, 12 and 13 students on the different apprenticeship options available to them from Levels 2-7 so that students are empowered to make the right decisions for themselves at post-16 and post-18 transition points.

#Careers Week 1 – Celebrating a diverse and inclusive workforce

During the week of 19-23 October, we celebrated #careers week 1. To tie in with Black History Month, the theme of this first #Careers Week of this academic year was to celebrate inspirational diverse figures in careers linked to each subject. Research suggests that students need to see people who look like them within companies and organisations to truly believe that they can be successful within particular industries. The engaging presentations our Careers Ambassadors showed during lessons throughout the week helped to introduce students to a range of different people and their career achievements.

#Careers Week 2 - I didn't know that was a job!

During the week commencing Monday 14 December, we will be celebrating #careers week 2. During this week we will be raising awareness of surprising career pathways and destinations linked to the different subjects that students study. There are some fascinating occupations out there and we aim to show students the wide ranging professions that students could embark upon in the modern world. The following BBC Bitesize link contains some interesting information <https://www.bbc.co.uk/bitesize/articles/zhst2sg>

Start u-explore Careers Software

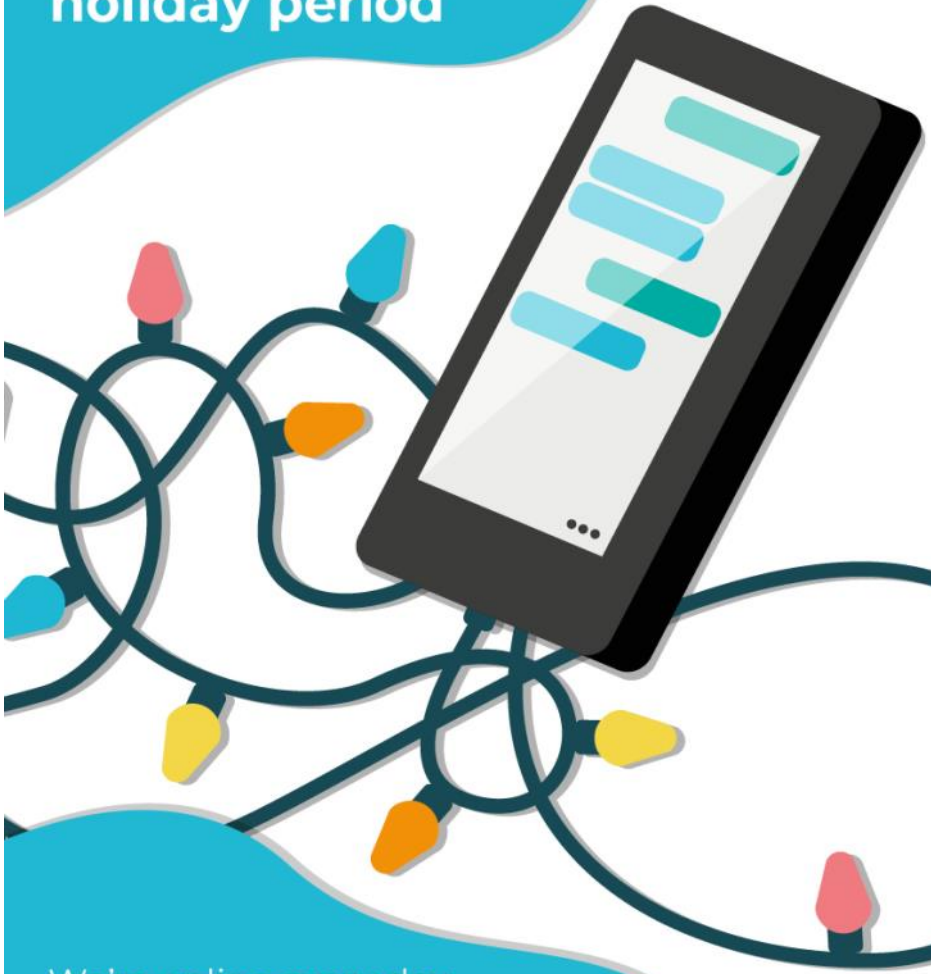
This software package is a fantastic opportunity to explore the many different options available to young people including:

- Up-to-date information from a variety of trusted sources
- Careers guidance for students in Years 7 to 13
- Support and guidance through key moments of choice and transition from education to employment
- Comprehensive information on careers and employability skills
- Local labour market information
- Support with writing job applications, CVs, assessment centres and the recruitment process

The website can be accessed via: <https://login.startprofile.com/Login.aspx>

Your child will have been set specific careers modules to complete from this careers software, relevant to their age and transition point.

You can still access support over the holiday period



We're online every day including **Christmas Day**
Sign up for free at **Kooth.com**

Student Poetry

This is a 'found' poem, constructed from a collection of non-fiction prose texts studied in English earlier in the term. Alfie R from Year 9 has done a fabulous job here, well done.

Power of rage

Rage is a feeling that is deposed and soiled,
Rage is not ghoulish, nor is it festering away,
Rage is forsaken and has taken a toll.
Abandoned by relations, surreptitiously humiliated
Frivolous ideas, no drudgery or suffering.
Rage is passive, and it is battered down.

It unfolds the demonstration of peace and justice,
It's the resolute concept for vigorous feelings.
To express your thoughts, to express your emotions,
Rage unlocks the back and beyond of your heart.
Although rage might attend most of your tantrums,
It might not seem, but it has other significant parts.



Train your Brain



Intelligence is the **ability** to learn, understand and make judgements or have opinions that are based on reasons (ref: Cambridge dictionary). Hence, it is a potential which is present in all individuals.

Whereas **Thinking** is a **skill** with which we can use that potential. We all know that our Brain is critical for the ability to learn and remember.



We **can** train our brain to grow new neurones (nerve cells) and establish more connections between them.

Thanks to our HIPPOCAMPUS - a pair of thumb-sized structures deep in the centre of the human brain which are critical for our ability to learn and remember – new connections can be formed between the neurones or old ones can be rewired which is key to improve our memory, ability to reason and evaluate different situations.

How can we exercise this?

- Set yourself meaningful goals
- Take micro-steps towards it every single day
- Adopt growth mindset
- Nurture your curiosity
- Become an Independent Learner and Thinker

SO NO DIPS, NO EXCUSES!! NEED TO JUST EXERCISE YOUR BRAIN TO FOSTER MORE CONNECTIONS

Good Luck

Mrs Bhattacharjee

Geographers of the Half Term

Congratulations to the following students who have impressed their teachers with quality of work, effort and commitment over this term.

TERM 1

Year 7

Jayden D
Holly H
Maddie H-B

Year 8

Lara C
Georgie L
Ethan M

Year 9

Aditya M
Louise R

Year 10

Megan H
Josh P
Sophie R
Mohammed S

Year 11

Dylan B
Amie W

Year 12

Simeon B
Hanisha C

Year 13

Toby I
Sophie M

TERM 2

Year 7

Ananya A
Katie B
Fraya O
Zayd T

Year 8

Lois J
Nivetha M
Henry O'H
Johnnie T

Year 9

Max A
Lucie L
Louise R

Year 10

Beth J
James M
Daisy T
Jack T

Year 11

Jessie C
Marley C
Katie S
Will W

Year 12

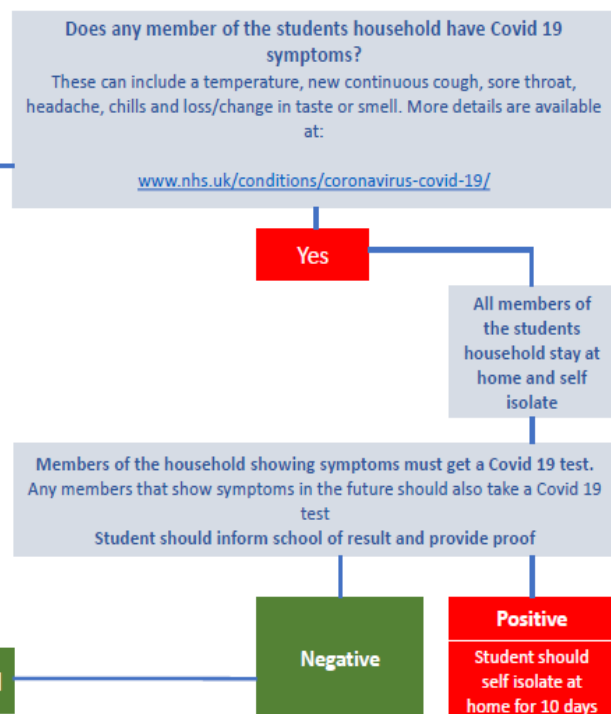
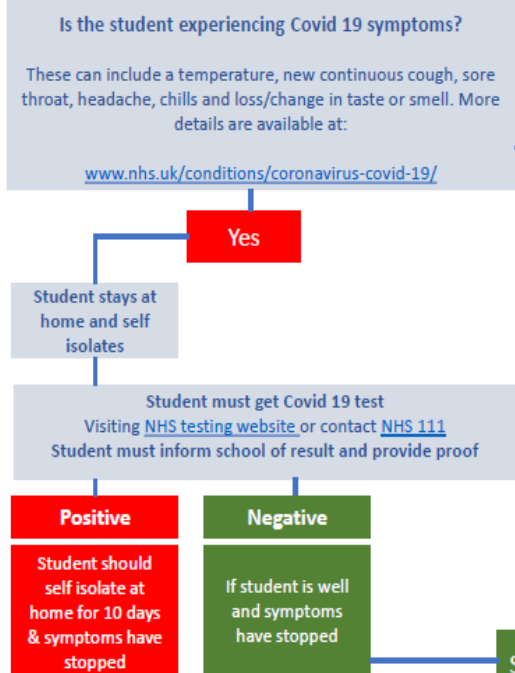
Annie B
Hanisha C
Jay T

Year 13

Millie L
Mario M

Maiden Erlegh School Guidance on Covid 19

This guide is to help you decide on whether a student with new Covid-19 symptoms should be in school today. Please take a couple of minutes to read through carefully.



If you are already self isolating, have been contacted by NHS Track and Trace or have returned from a location which requires quarantine; please complete your self isolation period of 10 days. Even if you, the student or your family test negative for Covid 19.

0118 929 6019
mesattendance@maidenierleghtrust.org
maidenierleghschool.co.uk

Maiden Erlegh Reverse Advent Calendar

Thank you to all students and parents who contributed to the Maiden Erlegh Reverse Advent Calendar. We know that Wokingham Food Bank are very grateful for the donations received!



EARLEY CRESCENT Resource Centre

Courses available in the New Year:

Confidence Building
How to Create an Effective CV
Prepare for a Successful Interview
Interview Skills
Intro to English Language and British Culture
Managing Life with Covid-19
Emergency First Aid
And many more!



[Click here to view further information](#)

Community Arts Spring 2021

THE PEACOCK GALLERY



Workshop, Courses and Exhibitions
 Click here to view our latest brochure.

Answers to maths challenge: Q5) c Q8) d Q22) a

PE Department

[Click here to view our latest Sports Bulletin](#)



Letters for Parents

www.maidenerleghschool.co.uk/letters-for-parents/

[Click here to view recent communications](#)



ParentPay

[Click on the ParentPay logo to login and register your account.](#)

Any queries please email us at ParentPay@maidenerleghschool.co.uk



ParentPay

OPPORTUNITY, DIVERSITY & SUCCESS FOR ALL