



MAIDEN ERLEGH A-level psychology summer preparation SCHOOL

Now that you've decided to study Psychology at A level, you'll need to do a bit of preparation. This pack contains activities and resources to prepare you to start your A level in September. It is aimed to be used after you complete your GCSE throughout the rest of the summer term and over the summer holidays to ensure you are ready to start your course in September.

WELCOME TO A-LEVEL PSYCHOLOGY!



COURSE DETAILS:

QUALIFICATION: 'A' Level

DURATION OF COURSE: 2 years

SPECIFICATION: AQA

COURSE WORK: No coursework, only exams

PAPER 1: INTRODUCTORY TOPICS IN PSYCHOLOGY EXAM

- 2 HOURS DURATION
- COMPULSORY CONTENTY
- A THIRD OF THE A2 MARK
- OUT OF 96 MARKS
- ❖ Social influence
- ❖ Memory
- ❖ Attachment
- ❖ Psychopathology

PAPER 2: PSYCHOLOGY IN CONTEXT EXAM

- 2 HOURS DURATION
- COMPULSORY CONTENTY
- A THIRD OF THE A2 MARK
- OUT OF 96 MARKS
- ❖ Approaches in psychology
- ❖ Biopsychology
- ❖ Research methods

PAPER 3: ISSUES AND OPTIONS IN PSYCHOLOGY EXAM

- 2 HOURS DURATION
 - COMPULSORY CONTENT PLUS THREE OPTIONS
 - A THIRD OF THE A2 MARK
 - OUT OF 96 MARKS
 - ❖ Issues and debates in psychology
- THEN CHOOSE ONE OPTION FROM EACH BLOCK.
- OPTION BLOCK ONE (CHOOSE ONE)
- ❖ Relationships
- OPTION BLOCK TWO (CHOOSE ONE)
- ❖ Schizophrenia
- OPTION BLOCK THREE (CHOOSE ONE)
- ❖ Forensic psychology

QUICK GUIDE TO THE 'A' LEVEL SUBJECT

ALL THREE PAPERS EXAMINED IN THE SUMMER AT
THE END OF THE A2 YEARS (MAY/JUNE)

UNDERSTANDING PSYCHOLOGY:

The British Psychological Society (BPS) who lay down the rules and regulations for all psychological activity in the UK define psychology as:

Psychology: *“the scientific study of the human mind and behaviour”*

1. WHAT IS PSYCHOLOGY? (watch this!) <https://www.youtube.com/watch?v=vo4pMVb0R6M>

ANSWER THE FOLLOWING QUESTIONS:

QUESTIONS	WRITE YOUR ANSWERS HERE
1. Why have I chosen to study this subject?	
2. What does it mean by human mind and human behaviour?	
3. What are psychologists interested in?	
4. Why should we study human behaviour and or human mind?	

2. WATCH: Psychological Research Crash Course Psychology #2, available on YouTube. The presenter speaks very quickly so you might need to pause frequently. How do Psychologists investigate behaviour? Identify how research is conducted. Is the research conducted similar to the way a science experiment is carried out?

<https://www.youtube.com/watch?v=hFV71QPvX2I&list=PL8dPuuaLjXtOPRKzVLY0jJY-uHOH9KVU6&index=3>

3. AQA WEBSITE: Familiarise yourself with the AQA website and explore the specification. Have a look at pages 35-37 to assess the maths skills which you require and will develop on the course.

<https://filestore.aqa.org.uk/resources/psychology/specifications/AQA-7181-7182-SP-2015.PDF>

AREAS OF PSYCHOLOGY

1 ABNORMAL PSYCHOLOGY

Focuses on the origin and constructs of mental illness, looking at unusual patterns of



THE GIST

How deviations from the norm are addressed and treated.

2 BIOPSYCHOLOGY

Concentrates on the relationship between



THE GIST

How biological changes lead to changes in behavior.

3 SOCIAL PSYCHOLOGY

Examines what people



THE GIST

How others impact our behavior.

4 COGNITIVE PSYCHOLOGY

Focuses on the processes underlying

ATTENTION MEMORY LANGUAGE
PROBLEM SOLVING DECISION MAKING

THE GIST

How specialized techniques are used to understand these processes.

5 DEVELOPMENTAL PSYCHOLOGY

Working with people of all ages, developmental psychologists

- Study how people grow & adapt, physically & psychologically
- Flag developmental delays & serious health issues
- Assist with interventions to get people back on track

THE GIST

Why cognitive, physical, personality and social factors play into how we evolve developmentally.

7 FORENSIC PSYCHOLOGY

Applying psychosocial knowledge to civil and criminal law, conducting forensic assessments for the court system to determine

CUSTODY EVALUATIONS &
COMPETENCY TO STAND TRIAL

THE GIST

Why this field is called the intersection of psychology and law.

6 PERSONALITY PSYCHOLOGY

Studying personality and how it varies among individuals, relying on research theories related to

PERSONALITY TRAITS EVOLUTION BIOLOGY
HUMANISM BEHAVIOR SOCIAL LEARNING

THE GIST

Why it's important to understand how personality develops and its similarities and differences between individuals.

8 INDUSTRIAL-ORGANIZATIONAL PSYCHOLOGY

Focused on the scientific study of working, this field has critical relevance to individuals, businesses and society by

- Applying research to issues facing employees, teams, and organizations
- Examining employee well-being and attitude, employer-to-employee relationships and overall workplace behavior

There are even further types of psychology that are not included above, such as, educational psychology, clinical psychology, sports psychology, health psychology, counselling etc. However, they are largely grouped into the six categories below.

4. TOPICS TO RESEARCH:

Research the following types of psychology and find out what they are and the types of behaviour they investigate:

1. COGNITIVE PSYCHOLOGY
2. DEVELOPMENTAL PSYCHOLOGY
3. SOCIAL PSYCHOLOGY
4. BIOLOGICAL PSYCHOLOGY
5. INDIVIDUAL DIFFERENCES/ABNORMAL PSYCHOLOGY
6. APPROACHES IN PSYCHOLOGY: Explore: Behaviourism, Psychodynamic, Cognitive, Biological, Social Learning Theory & Humanistic (briefly jot down their assumptions on human behaviour)

This website will be useful for this task. Don't forget to use other websites too!

<https://www.all-about-psychology.com/types-of-psychology.html>

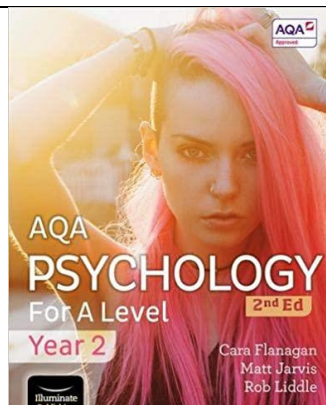
5. RECOMMENDED TEXT BOOKS FOR THE A-LEVEL COURSE



AQA Psychology for A level Year 1 & AS, 2nd Edition

By Cara Flanagan, Matt Jarvis & Rob Liddle

ISBN-13: 978-1912820429
Illuminate publishing



AQA Psychology for A level Year 2 & AS, 2nd Edition

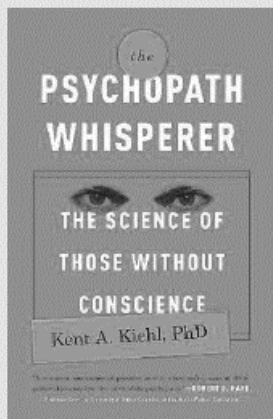
By Cara Flanagan, Matt Jarvis & Rob Liddle

ISBN-13: 978-1912820467
Illuminate publishing

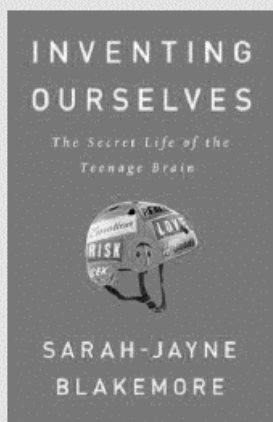
These are not essential as we provide copies for students to use in class. There is also an online version of the textbook that will be made available to all students in their first lesson. However, many students have found it useful to have their own personal copy to use for self-study and revision.

6. EXPLORING PSYCHOLOGY

Suggested reading:



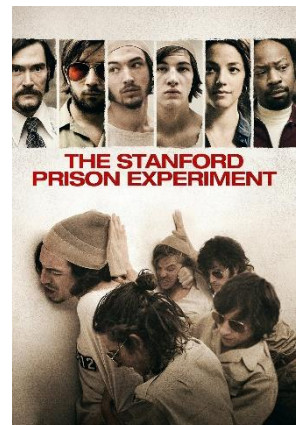
We know of psychopaths from chilling headlines and stories in the news and movies from Ted Bundy and John Wayne Gacy, to Hannibal Lecter and Dexter Morgan. As Dr Kent Kiehl shows, psychopaths can be identified by a checklist of symptoms that includes pathological lying; lack of empathy, guilt, and remorse; grandiose sense of self-worth; manipulation; and failure to accept one's actions. But why do psychopaths behave the way they do? Is it the result of their environment how they were raised or is there a genetic component to their lack of conscience?



Drawing upon her cutting-edge research Professor Blakemore explores: What makes the adolescent brain different? Why does an easy child become a challenging teenager? What drives the excessive risk-taking and the need for intense friendships common to teenagers? Why it is that many mental illnesses – depression, addiction, schizophrenia – begin during these formative years. And she shows that while adolescence is a period of vulnerability, it is also a time of enormous creativity and opportunity.

Suggested films:

What happens when you put good people in an evil place? Does humanity win over evil, or does evil triumph? These are some of the questions we posed in this dramatic simulation of prison life. In 1971, Stanford's Professor Philip Zimbardo conducts a controversial psychology experiment. Twenty-four male students are selected to take on randomly assigned roles of prisoners and guards in a mock prison situated in the basement of the Stanford psychology building.



Suggested BBC podcasts and youtubers



'All in the Mind' is a half-hour magazine radio programme about psychology and psychiatry, mental health and neuroscience broadcast in weekly episodes on Radio 4 and produced by the BBC's Science Unit.

'Mind Changers' is a half-hour episode where Claudia Hammond takes a classic psychological experiment and travels to where it was conducted, to discover whether there was more to it than we read in the textbooks. She also traces the impact the study has had since then.



'Crash Course Psychology' is a series of 40, 10-minute videos exploring important psychological ideas and research in a fun and quirky way. These are available for free on YouTube. Episode 1 and 2 were included in the activities above.