

# Trust News



MAIDEN ERLEGH  
TRUST

December 2022



## CEO Welcome



I hope that, as you read through this newsletter, you will get a sense of just how wonderfully diverse our organisation is and what great opportunities we provide for the children and young people in all of our schools.

The unwavering commitment to high standards, high ambition and high aspiration for all is lived out right across our community, borne out not just in exceptional outcomes but also in the variety of enrichment and community-focussed activities undertaken across the breadth of our organisation. None of this would be possible, however, without the dedication and commitment of our superb staff and I want to take this opportunity to recognise the outstanding contribution they make to the lives of our children and young people and also to the communities they serve.

As the clock winds down on a rather challenging 2022, may I take this opportunity to you wish you all a very happy and healthy festive period.

**Jonathon Peck**  
Chief Executive Officer

## EDE Reflection



When they were young, my children's favourite film was Toy Story....it might still be, but they won't admit it! Central to the story, of course, is Buzz Lightyear - a man on a mission "to infinity and beyond". Whilst his catch phrase lacked

definition (and some rationality), there was something appealing about the audacity of his aspiration. As educationalists we are in the audacious aspiration business – committed to helping children and young people lift and widen their gaze and perspective about their future. We encourage children to be bold, brave and even sometimes to take risks and I am proud of how we pursue this across our varied and diverse schools, day in day out.

As an organisation we nurture and develop strong school communities who, in turn, provide the highest service to local families giving our pupils exceptional care and the very best educational opportunities. That is a "Big Ask"! After all, daily we are educating over 3500 young people all with individual personalities, needs and preferences - it is a challenge that every member of staff, no matter what their role, willingly rises to – day in day out. As Director of Education, it is a huge privilege to regularly visit each setting and discuss with pupils and school leaders their plans for future development. In every school I am struck by the optimism resilience and strong moral purpose that I find. I am also proud that our school communities are as committed to supporting children in the development of their character as we are to formal learning. I have been struck by the obvious benefits of our determination to work collaboratively and supportively across our schools. The whole is indeed greater than the sum of its parts.

I wish you a peaceful break and look forward to an even better 2023... and beyond!

**Andy Johnson**  
Executive Director of Education

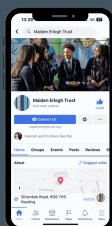


**You can now also follow  
Maiden Erlegh Trust on  
Facebook.**

[@MaidenErleghAcademyTrust](https://www.facebook.com/MaidenErleghAcademyTrust)

Like

Share



[www.maidenerleghtrust.org](http://www.maidenerleghtrust.org)



0118 929 6020



[METadmin@maidenerleghtrust.org](mailto:METadmin@maidenerleghtrust.org)

# Cranbury College



Cranbury College is on an exciting journey of development, which includes a new offer for non-commissioned children in secondary school, called the Re-Engagement Programme (REPS). We hope to support as many young people as possible, via a 12-week transitional package to support them in engaging with their mainstream education, reducing the risk of suspension and exclusion. For the primary school, we are developing our outreach offer to best support local schools – we look forward to your feedback to help build this already successful service.

A huge thank you to our Hospital team who work tirelessly in supporting our most vulnerable students and children who are too poorly to attend school. Our service taught 99 children between Sept – October, delivering over 280 one to one sessions in this time! This is the hidden school that needs some big praise! #YourFutureStartsHere #ThisisAP

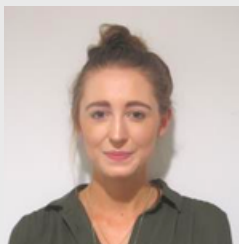


## ECTs

We continue with the Early Career Teachers programme this term, with both year 1 and year 2 cohorts. Early Career Framework (ECF) lead facilitator, Chloe has been really impressed with our ECTs.



## Maiden Erlegh Institute



I am delighted to be the Lead Facilitator for both our Year 1 clusters, comprised of ECTs from Maiden Erlegh School, Maiden Erlegh Reading, Maiden Erlegh Chiltern Edge, Blessed Hugh Faringdon, UTC Reading, Chiltern Way Academy, Theale Green, John Madejski Academy, and Reading Girls School.

I have been thoroughly impressed by our ECTs willingness to contribute to discussions and share best practice with their peers. It has been fantastic to see ECTs not only sharing tips of their own, but asking for advice from other ECTs to support them in their developing practice.

**Chloe Bateman**  
ECF Lead Facilitator



## Great Hollands Primary School



Great Hollands Primary is proud to be recognised as one of the highest performing schools in the UK. Data released by the DfE shows that the progress made by our pupils is in the top 20% of all schools. In fact, in key areas, estimates place GHPS in the **top 3% of all schools for maths**, top 8% for writing and top 15% for reading.

**Congratulations to Dexter winning the Skylark sculpture naming competition.** He named his skylark Melody-Rocket, due to the lovely melodies they sing and how they fly fast like a rocket. He received a fantastic box filled with arts and crafts goodies, including a wooden skylark for him to paint and put on his wall at home.

**Schools for the community, schools as a community**



[www.maidenerleghtrust.org](http://www.maidenerleghtrust.org)



0118 929 6020



[METadmin@maidenerleghtrust.org](mailto:METadmin@maidenerleghtrust.org)



# Hamilton School



Hamilton School is continuing its journey of improvement and our students are developing new life skills, working hard to get great GCSEs, having respect for one another, and working together as a school to make the future of Hamilton School brighter than it ever has been. With parents' evening coming up we are proud of our students with attendance looking up and having lots of great work to show.

The staff are working hard to bring the students together to enjoy a 'School Christmas'; we have a Christmas jumper day coming up, along with a festive Christmas dinner for all to feel a sense of joy and revel in the Christmas period.

# Maiden Erlegh Chiltern Edge



We are delighted by the start to the school year with our biggest Year 7 intake in many years. They have settled incredibly well. The photo included is of the Headteacher, Mr Hartley, having a celebratory hot chocolate with some of the most successful members of the year group.

In addition, we have recently celebrated the successes of last year at our wonderful annual Presentation Evening. This included some wonderful speeches from our students, a very special recap of the year and a keynote address from our CEO, Jonathon Peck. This capped off a wonderful year which saw us achieve our fantastic OFSTED of 'Good'.



# Ukrainian Appeal



The MES Sixth Form Student Leadership Team recently chose to partner with local schools in the area to collect 20 tonnes of winter clothing and blankets for those in Ukraine who will experience freezing temperatures this winter. Well done to the Sixth Form Student Leadership Team Ukrainian Appeal and thanks to all students and parents who donated blankets and warm clothing. On Monday 28 November a minibus full of donations left Maiden Erlegh School, bound for Ukraine.

# Maiden Erlegh School



Maiden Erlegh School has recently achieved Silver status in the Equalities Award run by Equaliteach.

During the process of bidding for the award the school has had to provide evidence across the four key areas of Behaviour and Welfare, Leadership and Management, Personal Development of Pupils and Teaching and Learning.

Silver status showcases the work that the school has undertaken to ensure that the school is a safe place for all students. Thank you to all those who have provided evidence for this award.



**Schools for the community, schools as a community**



[www.maidenerleghtrust.org](http://www.maidenerleghtrust.org)



0118 929 6020



[METadmin@maidenerleghtrust.org](mailto:METadmin@maidenerleghtrust.org)



# Maiden Erlegh School in Reading



This year saw Maiden Erlegh School in Reading receive their first full set of GCSE results. These saw our students achieve at or above national averages in many areas. Our progress 8 score was positive and among one of the best within Reading schools. Our results also saw a high proportion of students taking an academic route and studying the Ebacc qualification.

At Maiden Erlegh School in Reading we enjoy celebrating our diversity and are holding our annual Cultural Diversity Day in early December. Students take part in a range of activities and learn about each other's cultures, accumulating in a festival where they share their national dress, food and traditions.



## Oak Tree School



We are delighted to finally be able to confirm that we have appointed a Headteacher to lead Oak Tree School.



Abi Davis joins us from Upton Grange School in Slough, an independent special school for children with ASD. She brings with her experience of opening a new special school and leading that through its growth phase and we are excited by her plans for the development of Oak Tree School.

We will be beginning the recruitment process for roles at Oak Tree School, both teaching and non-teaching after Christmas so do keep an eye out and apply if there is a role that you are interested in.

**OAK TREE SCHOOL**

# RECRUITMENT EVENT

**Tuesday 17 January 2023 | 4:30pm until 6:00pm**

This event will be held at:  
📍 **Hamilton School, 135 Bulmershe Road, Reading, RG1 5SG**

In the new year we will be looking to make key appointments so please come and talk to us if you are interested in working at Oak Tree School. There will be staff on hand at the event, to talk to about the opportunities available.

Vacancies within the Trust can be found on the website [HERE](#).

## River Academy



Following a detailed and collaborative design process, we are very excited to share with you a CGI fly-through of how our school building will look once it is finished.

### CGI Fly-through



Work has now started on site and we will publish regular progress updates as and when they happen - watch this space!



**Schools for the community, schools as a community**



[www.maidenerleghtrust.org](http://www.maidenerleghtrust.org)



0118 929 6020



[METadmin@maidenerleghtrust.org](mailto:METadmin@maidenerleghtrust.org)